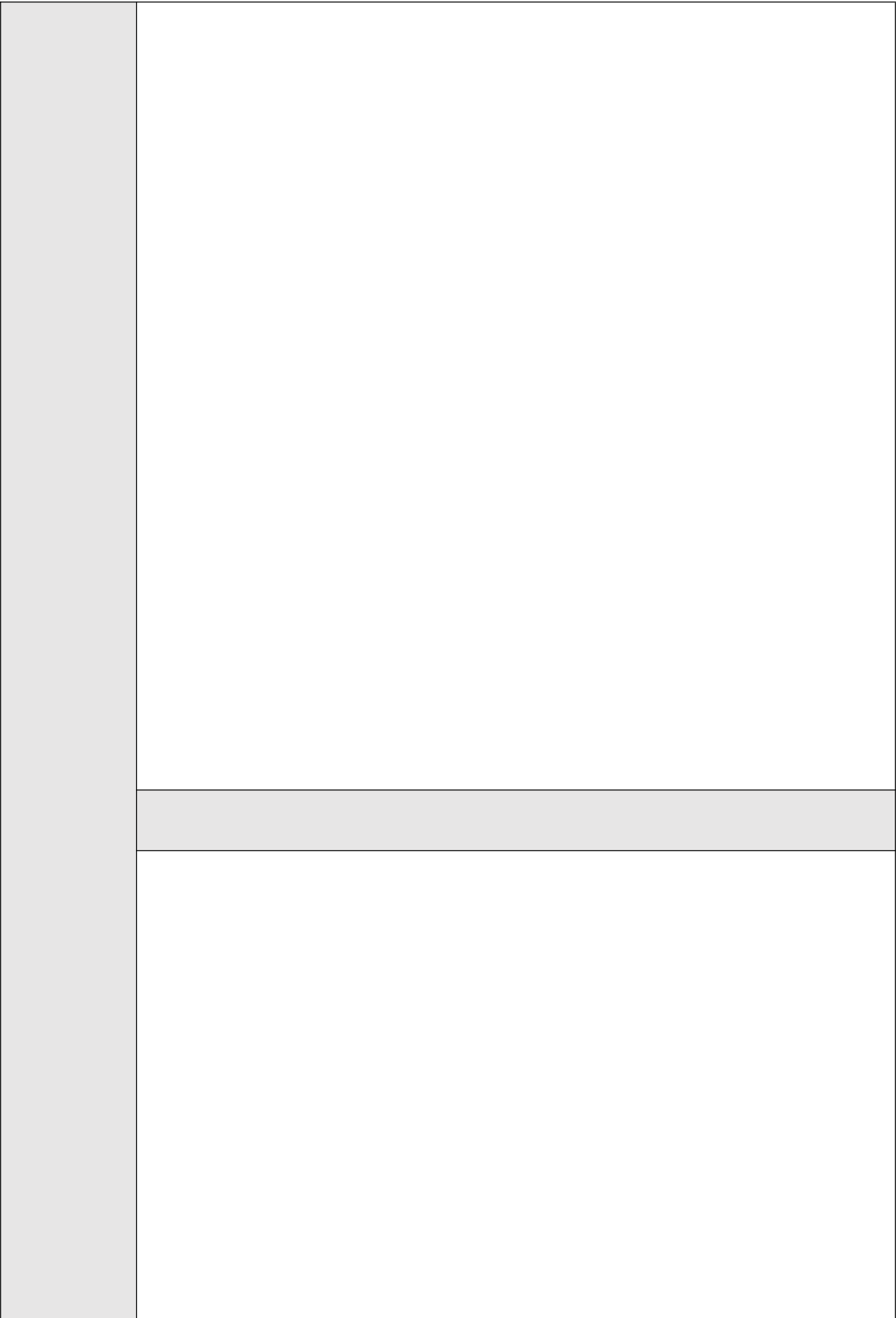
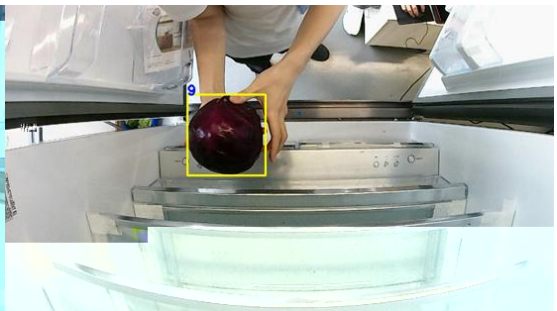


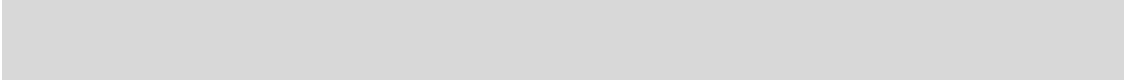




”







f3119a46-0b0e-44d2-bb16-
7783e449d25a



王某某^{1,2}, 孙某某^{1,2,*}, 李某某^{2,3}

2.1.2 量和单位

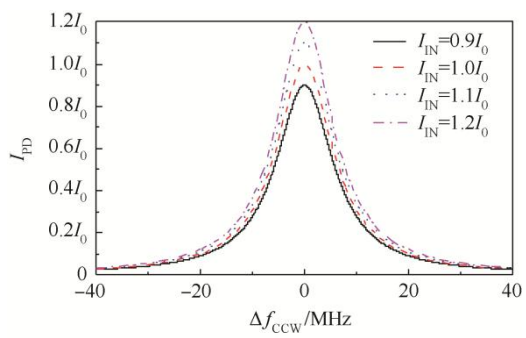
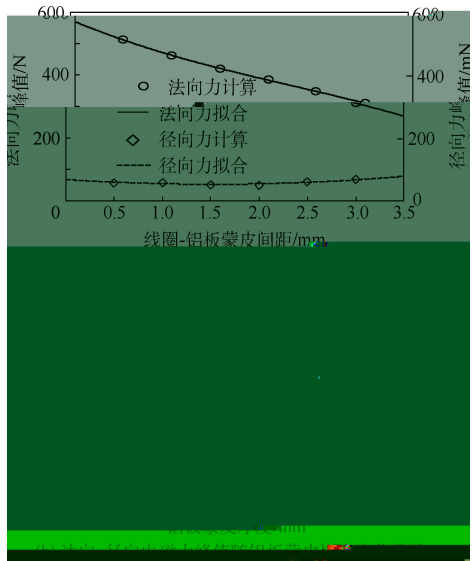
1

2.1.3 字体

2.1

2.1.1 公式编排

$$i(\rho) = \frac{H_c}{\rho} - \rho_{H_c} \quad (1)$$



2.2.2 表格

[D].
: ,2010 15-20.
[3] M . ().
: , : . [M].3 :
,2008:93-94.
[4] C // .
: , : .
[5]

2
GY/T 202.2 2007[S].
2007:4-8.
[R]

CARL E J. ANALYSIS OF FATIGUE, FATIGUE-CRACK
PROPAGATION AND FRACTURE DATA, AIAA-2009-1363[R].
RESTON: AIAA, 1973:11-13.

ZHUANG Z.PACS-L:THE PUBLIC-ACCESS COMPUTER
SYSTEMS FORUM EB/OL HOUSTON, TEX: UNIVERSITY OF
HOUSTON LIBRARIES, 1989 1995-01-12 [1995-05-17].
HTTP://INFO.LIB.UH.EDU/ PACS1.HTML.

[1] J . , ():
YANG L Y,ZHAO G,WU B B, A embl eq ence planning
for airgraf componen ba ed on impro ed cla he ma ri [J].Applied
Mechanic and Ma erial ,2011,88/89:22-28.

(不超过10个实词，不出现非公知公用的缩写词)

WANG Mo mo^{1,2}, SUN Mo mo^{1,2,*}, LI Mo mo^{2,3}

1. School of ****, **** Uni er i , Beijing 100191, China
2. School of ****, **** Uni er i , Beijing 100191, China
3. College of ****, **** Uni er i , Xi an 710072, China

ke ord1; ke ord2; ke ord3; ke ord4; ke ord5